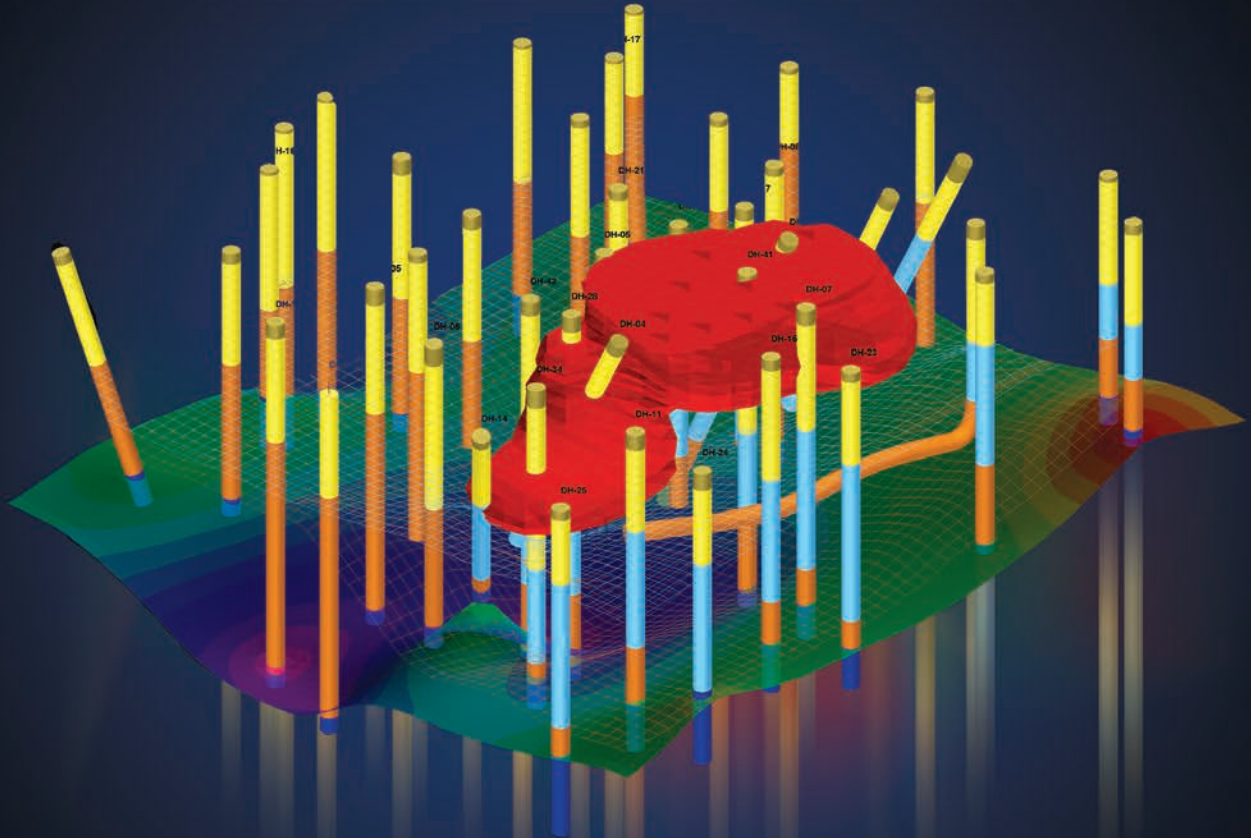


GEOSCIENCE SOFTWARE, CONSULTING & TRAINING

FOR OVER 39 YEARS



Environmental



Geotechnical



Hydrology



Mining

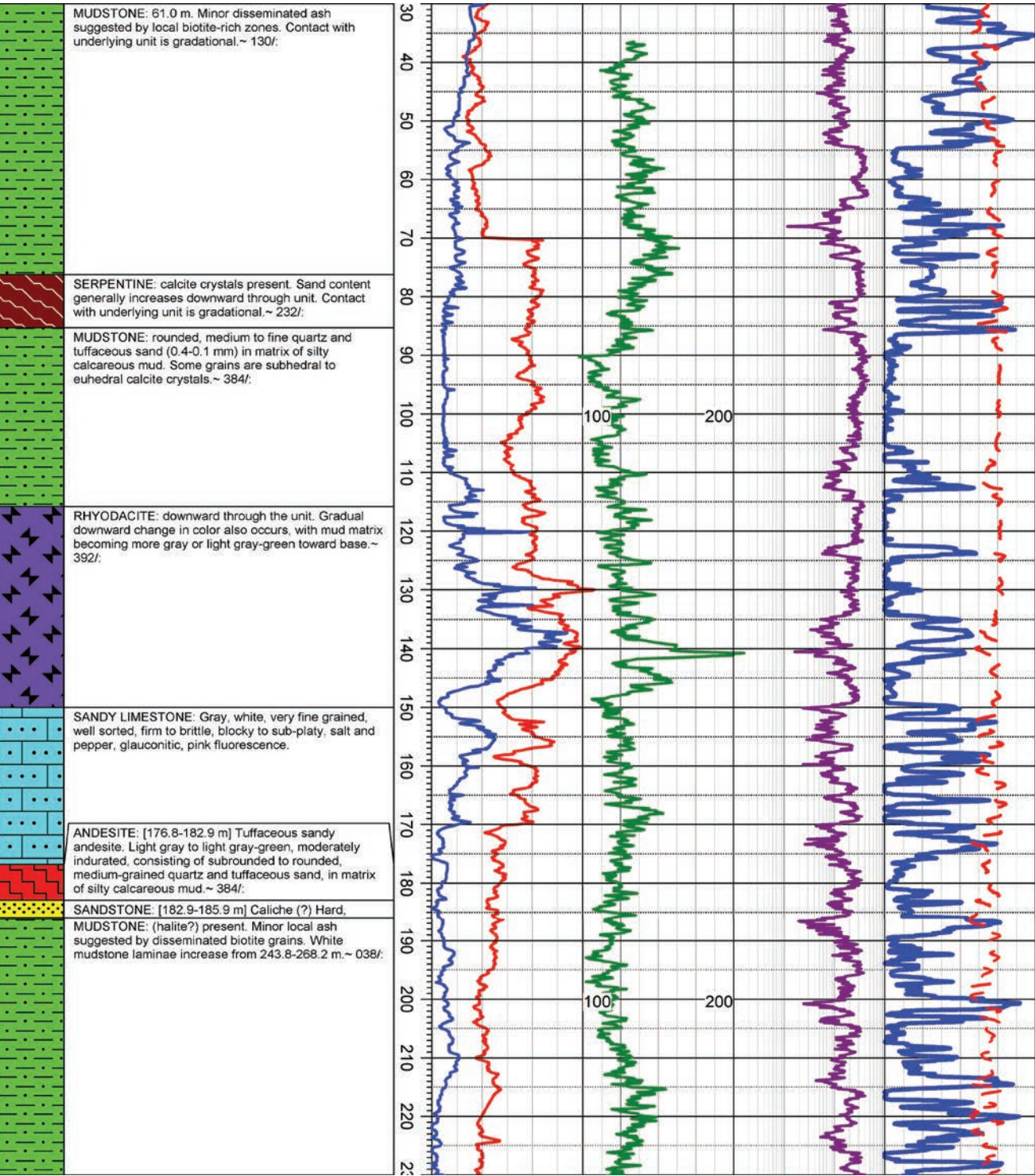


Petroleum



RockWare®

Since 1983



New Streamlined Interface

The LogPlot Data Editor, Log Designer and LogViewer have been Redesigned for use on Multiple Monitors and to make the creation and modification of logs easier than ever. Improvements to many of the import/export tools (PDF, Excel Multi-sheet, LAS)



Single \$999 Network \$1,748 Academic \$333
Download free trial at rockware.com

The Log Designer

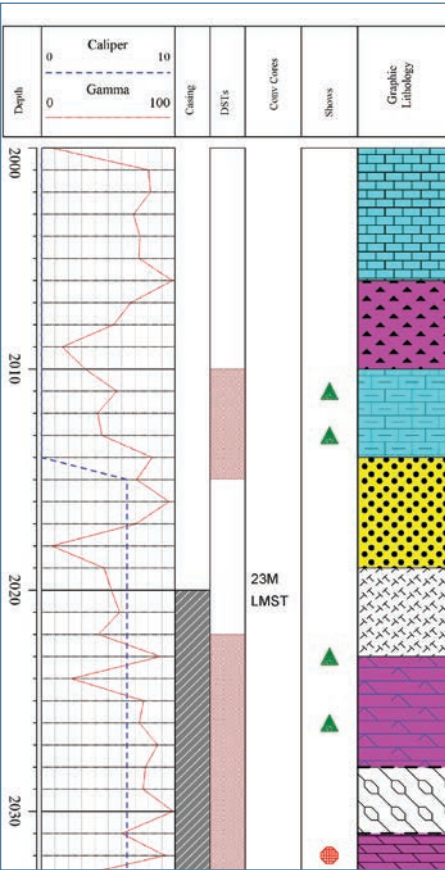
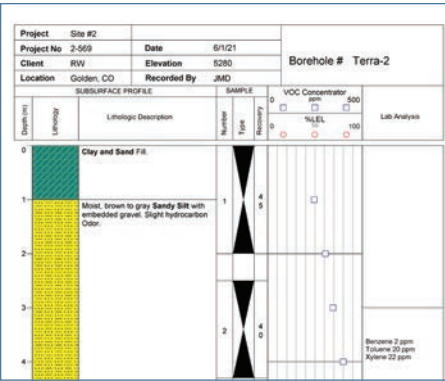
- The Log Designer allows you to quickly design borehole and well logs and modify existing design templates.
- Easy to use, with point, click, multiple-select and alignment capabilities
 - Multi-pane re-vamped design window displays headers, footers and log body
 - Two header and footer designs, full page report header
 - Well information linking between data file and header/footer fields
 - Macros for dates, page numbers and well locations
 - Header/footer images, patterns, symbols, curve and bargraph legends, notes and text
 - The log body can include any number and combination of columns, including lithology patterns and descriptions, cuttings percent columns, single and cross-plot curves, bargraphs, interval and point-based text, tadpoles, fracture traces (NEW), well construction, raster images, fillbars, water levels and other symbols and scale bars

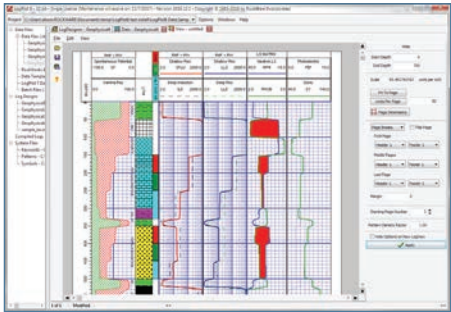
The Data Editor

- Type, copy/paste and or import your log data into the Data Editor.
- Tabbed data sheets with a flexible layout, for easy data entry
 - Data sheets added on the fly, or automatically updated from the log design
 - Double-click access to RockWorks borehole records, data can now be extracted from and written directly to the RockWorks database
 - Data import from LAS, Excel, DBF, AGS and text
 - Data export to LAS, Excel and RockWorks
 - Data types: lithology/stratigraphy, interbeds, cuttings percentages, curves, interval and point-based data and text, general comments, header/footer text and notes, symbols, fillbars, downhole survey, tadpoles, fractures and well construction
 - Easy linking of keywords ("sandstone") to graphic patterns and colors

The Log Viewer

- Create paginated or continuous logs
- Compile and display multiple logs at once
- Quickly re-display logs at any scale and adjust header/footer settings
- Use your mouse to view depth/elevation at any point on the log
- Graphic export options include PDF, HTML (for display online), BMP, JPG, TIFF and PNG
- Print your log, export an image of a single page or export all pages in a single image





Other New Features in LogPlot8

New Patterns

The LogPlot Pattern Editor now supports the new pattern library with filled shapes and an unlimited number of items.

New Streamlined Interface

The LogPlot Data Editor, Log Designer and LogViewer have been redesigned for use on multiple monitors and to make the creation and modification of logs easier than ever.

New Log Data Tools

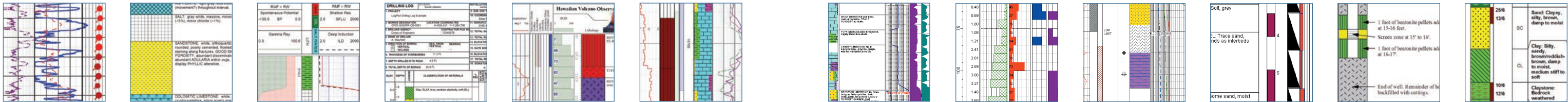
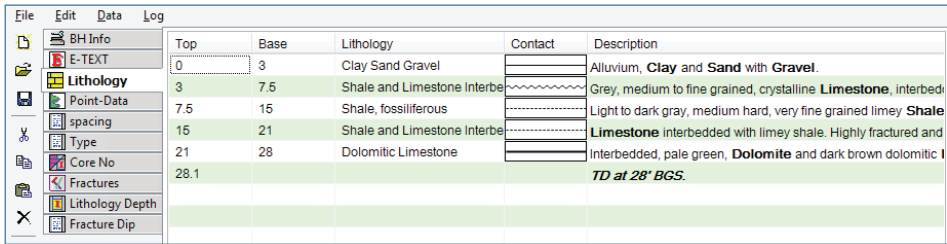
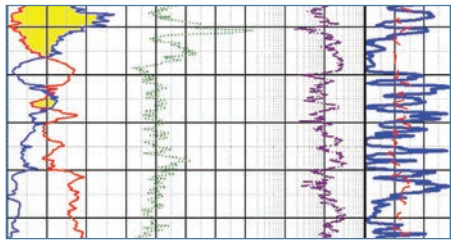
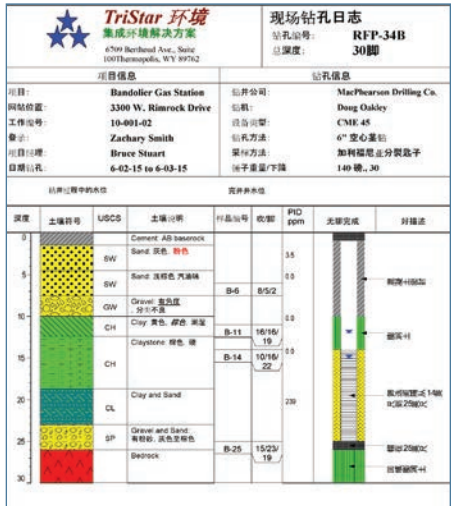
- New text formatting for text descriptions—bold, italic, underline, color, superscript, subscript or symbols
- New wavy and thick contact lines for display in Lithology pattern columns
- LogPlot now supports Unicode for non-Latin characters
- New tools add increased flexibility when defining data page names and columns
- New Data Templates to store customized data entry forms

New Log Display Tools

- Header/Footer symbol and pattern legends
- Log body fracture columns and water level symbols
- Offset options for interval text columns
- New color gradient options for log body curves
- New static text macros
- Curve/bargraph headers that can move when the column location is adjusted
- Rotated Header text and notes

New Network License Manager

- Easy to set up
- Borrow a license for use in the field

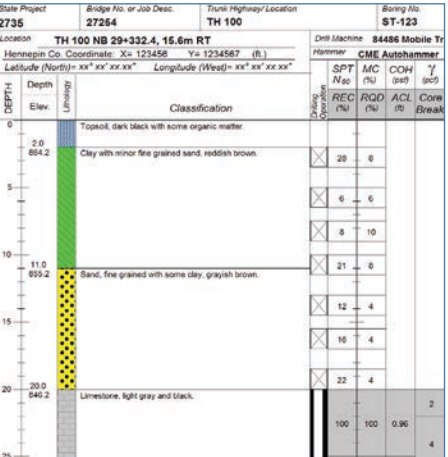
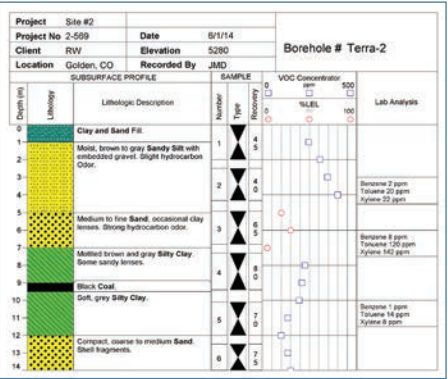
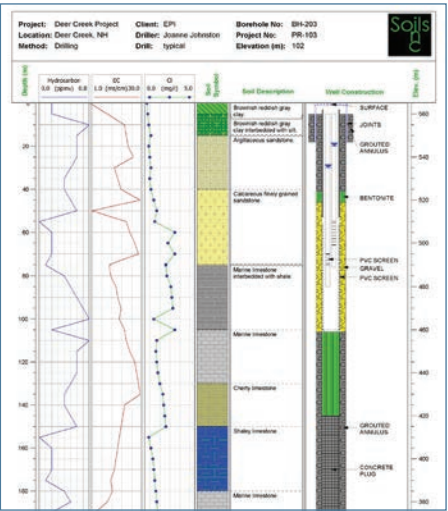
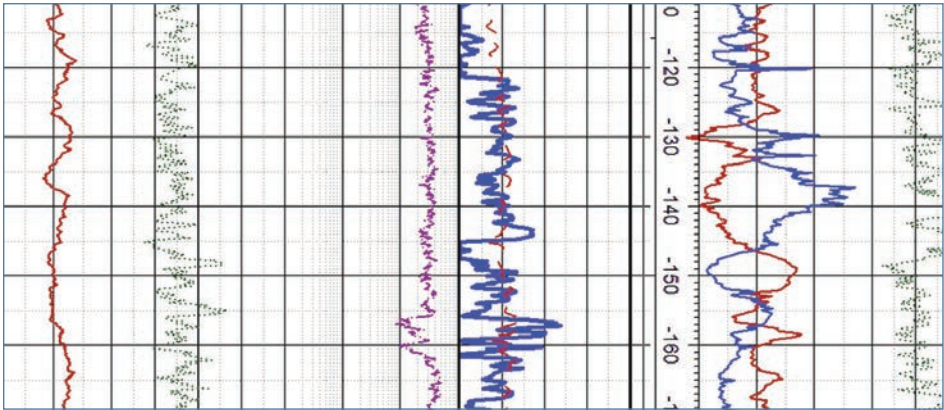


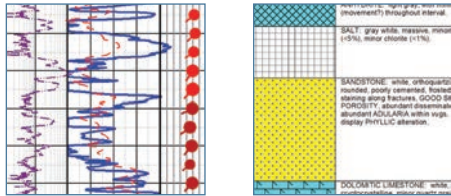
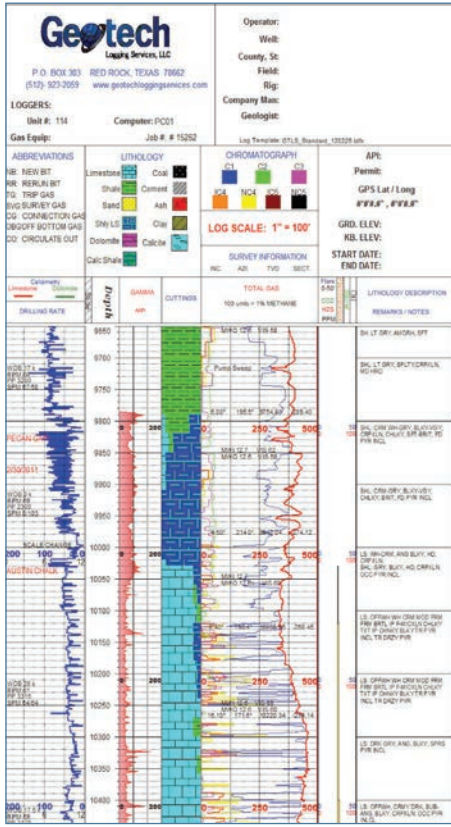
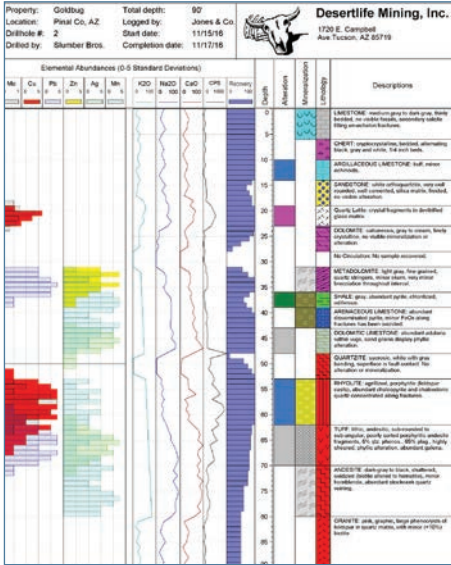
Environmental

- Soil and rock type symbols and descriptions
- Sample symbols, names, descriptions and data
- VOC data collected from MIP or other sampling devices
- OVA/PID data
- Borehole geophysics
- Detailed well construction diagrams, including nested wells
- Water level data
- Water and soil contamination information
- Blow counts, RQC and other geotechnical parameters

Oil & Gas

- Well/borehole geophysics
- Gas curves
- Drilling rate, RPM and Weight on Bit
- Lithologic Cuttings data
- Formation tops and descriptions
- Casing and perforation diagrams
- Drill Stem Test intervals
- Fossils
- Core data, including intervals and fractures
- Pay zones and show intervals



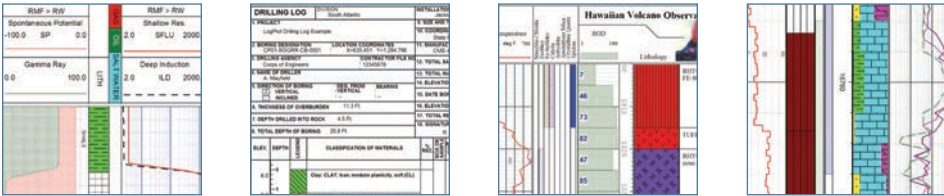
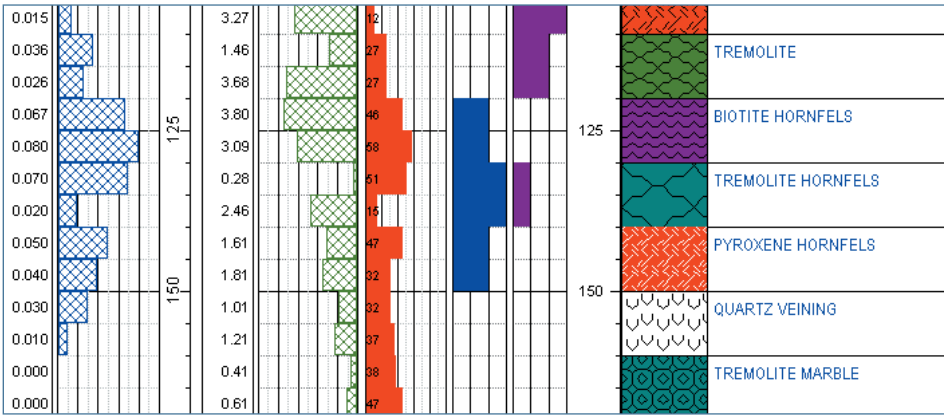


Mining

- Soil and rock type symbols and descriptions
- Core symbols and data, including Recovery and RQD
- Assay results
- Munsell Color Codes
- Fracture spacing, filling and orientation
- Alteration, mineralization and oxidation values
- Casing and well construction
- Water level data

Geotechnical

- Soil and rock type symbols and descriptions
- Blow counts, RQD and other geotechnical parameters
- Core symbols and data, including Recovery and RQD
- Fracture information, including spacing, orientation and aperture
- Sample symbols, names, descriptions and data
- Borehole geophysics
- Atterburg Limits
- Grain Size and sieve analysis results
- Water level data
- Water and soil contamination information
- CPT data, plotted as curves or colored intervals



\$349

Download free trial at rockware.com

Still storing your water analysis in Excel®? AqQA was created with water engineers and aqueous geochemists in mind—or for that matter, anyone who keeps water chemistry data in a spreadsheet. Analyzing your water testing data is as easy as 1, 2, 3 with AqQA:

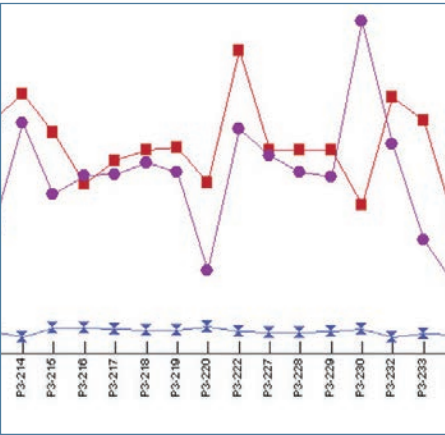
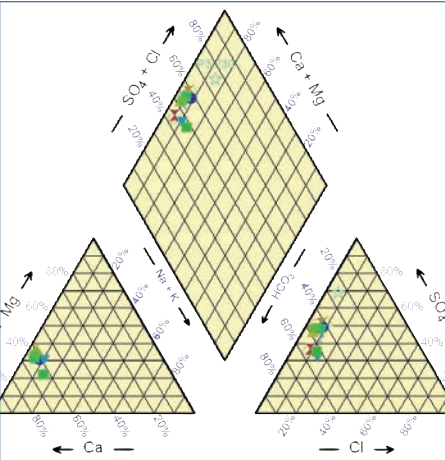
- 1) Paste your water analysis data in the "Data Sheet" tab
- 2) Click on the "Data Analysis" tab to check water testing data for internal consistency, and view other calculated water properties
- 3) Use the "New Graph" tab to create publication quality graphics—includes Piper diagram, Stiff diagram and nine other plot types

AqQA features

- Six tests for water data consistency according to AWWA 1030-E Standard Methods
- 11 plot types: Series, Time Series, Cross Plot, Ternary, Stiff, Piper diagram, Durov, Schoeller, Ion Balance, Pie Chart and Radial Plot
- Calculates carbonate equilibria, TDS, density, conductivity, hardness and more
- Flags violations of water quality standards
- Check replicates and standards
- 200 pre-defined analyte types—inorganic, organic, biological assay, radioactivity, isotopes—or define your own

With the AqQA spreadsheet, you can:

- Paste data directly from Excel
- Convert units with a mouse click—no more keying in mole weights
- Use common spreadsheet tools such as copy, paste, transpose, sort and many others
- Compare replicate analyses and check standards
- Mix samples
- Flag exceedances of regulatory limits
- Check for internal consistency against AWWA standards
- Calculate fluid properties such as water type, TDS, hardness, conductivity and carbonate speciation
- Calculate calcite saturation and CO2 fugacity
- Quickly create Piper, Stiff, Ternary, Durov and seven other plot types

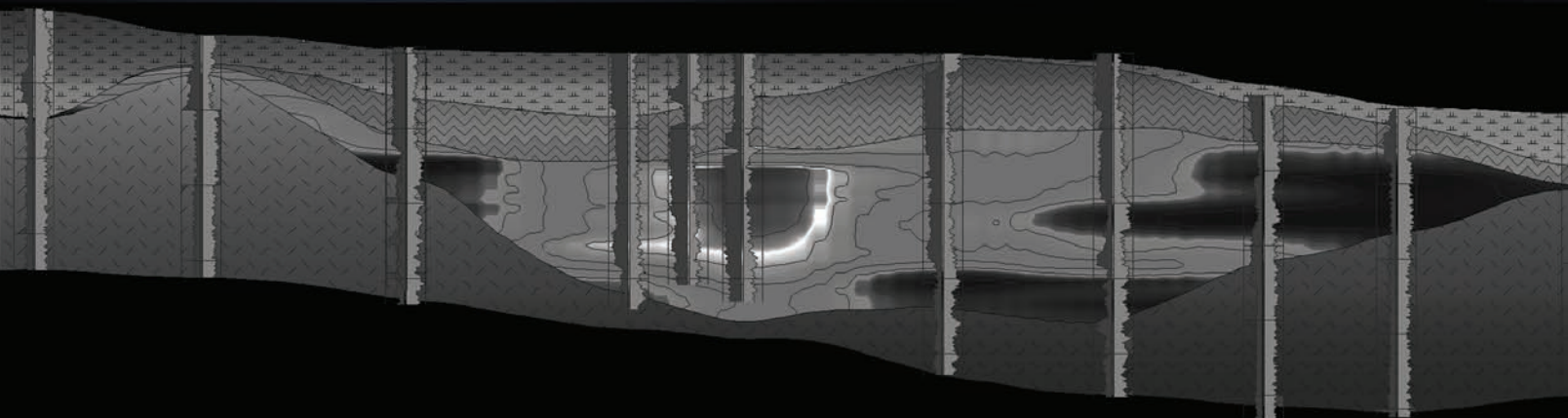


▼ Fluid Properties			
Water Type	C ₆ H ₁₂ O ₆		
Dissolved Solids	1330 mg/L	1347.4 mg/L	Measured
Density	0.99805 g/cm ³		Calculated
Conductivity	1330 µmho/cm		Measured
Hardness (as CaCO ₃)			
Total	811.69 mg/L	810.1 mg/L	Calculated
Carbonate	811.69	810.1	
Non-Carbonate	0.0	0.0	
▼ Internal Consistency			
Primary Tests			
Anion Cation Balance			
Anions	15.2		
Cations	17.4		
% Difference	6.669		Not within ± 5%
Measured TDS = Calculated TDS			
Measured	1330.000		
Calculated	1280.810		
Ratio	1.034		OK
Measured EC = Calculated EC			
Measured	1330.000		
Calculated	1405.529		
Ratio	0.952		OK
Secondary Tests			
Measured EC and Ion Sums:			
Anions	1103298		Not within preferred range (0.9-1.1)
Cations	1260960		Not within preferred range (0.9-1.1)
Calculated TDS to EC ratio	0.928		Not within preferred range (0.55-0.7)
Measured TDS to EC ratio	0.978		Not within preferred range (0.55-0.7)
Organic Mass Balance			
DOC ≥ Sum of Organics			
DOC unavailable			
Carbonate Equilibria			



US Office
2221 East Street
Golden CO 80401
303.278.3534
800.775.6745
F: 303.278.4099
rockware.com

European Office
Vicolo dei Saroli 1
6944 Cureglia
Switzerland
+41 91 967 52 53
rockware.com



RockWare Training

Too busy to teach yourself? Get up to speed fast with RockWorks training courses.

- Focus on the software for two days—WITHOUT office interruptions.
- RockWare trainers are both software and industry experts.
- Courses cater to all levels and backgrounds.

Workshops

Workshops are periodically held in Golden Colorado. See RockWare.com for a workshop schedule.

Custom Training

Custom courses can be held onsite in your office, or via the web in an online meeting. Courses can follow a standard curriculum or can be tailored to address client-specific problems and needs.

Email training@rockware.com
or visit rockware.com for pricing and additional information.